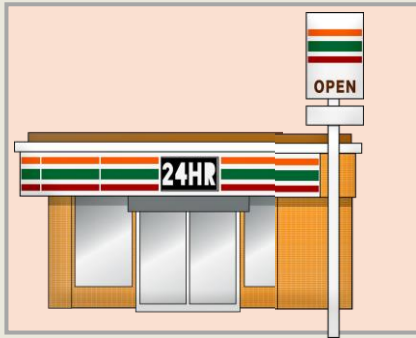




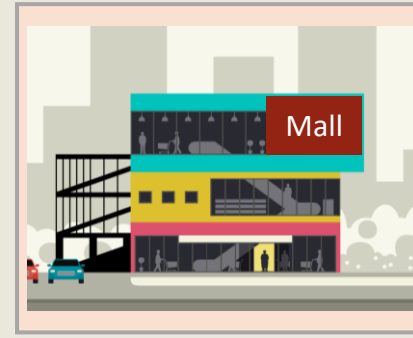
Can you tell me how to get to ....?



convenience store



supermarket



shopping mall



100 yen store

**Do you like shopping?**

Yes, I do. / No, I don't.

**Where do you go shopping?**

I go to the \_\_\_\_\_

**What do you buy?**

I buy \_\_\_\_\_

**What is your favorite store?**

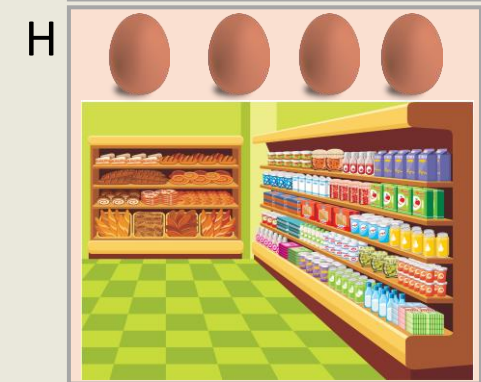
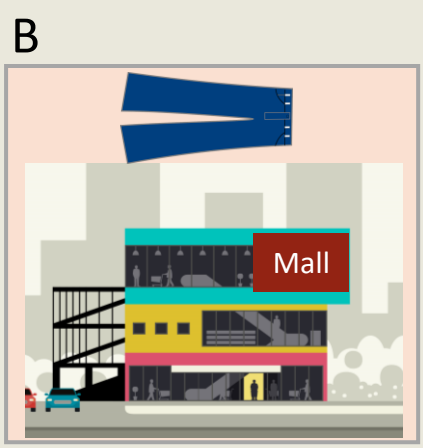
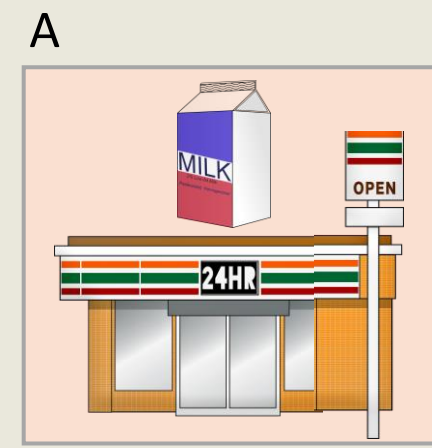
I like \_\_\_\_\_.

# Activity A: Do you buy eggs?

Student A asks questions about pictures on the page. Student B answers the questions.

**Words:** supermarket, shopping mall, convenience store, 100 yen store, apples, shoes, ice cream, pencils, erasers, eggs, milk, jeans

<b>A:</b> Do you like to buy ....?
<b>B:</b> Yes, I do.
<b>A:</b> Where do you buy it / them?
<b>B:</b> At the ....



## Activity B: My favorite store

Have a conversation with your teacher about your favorite store.

What is your favorite store?



I like (stores name 日本語).



Why do you like it?



I like it because .....



Where is it?



It's near my house / near the station / near my school.

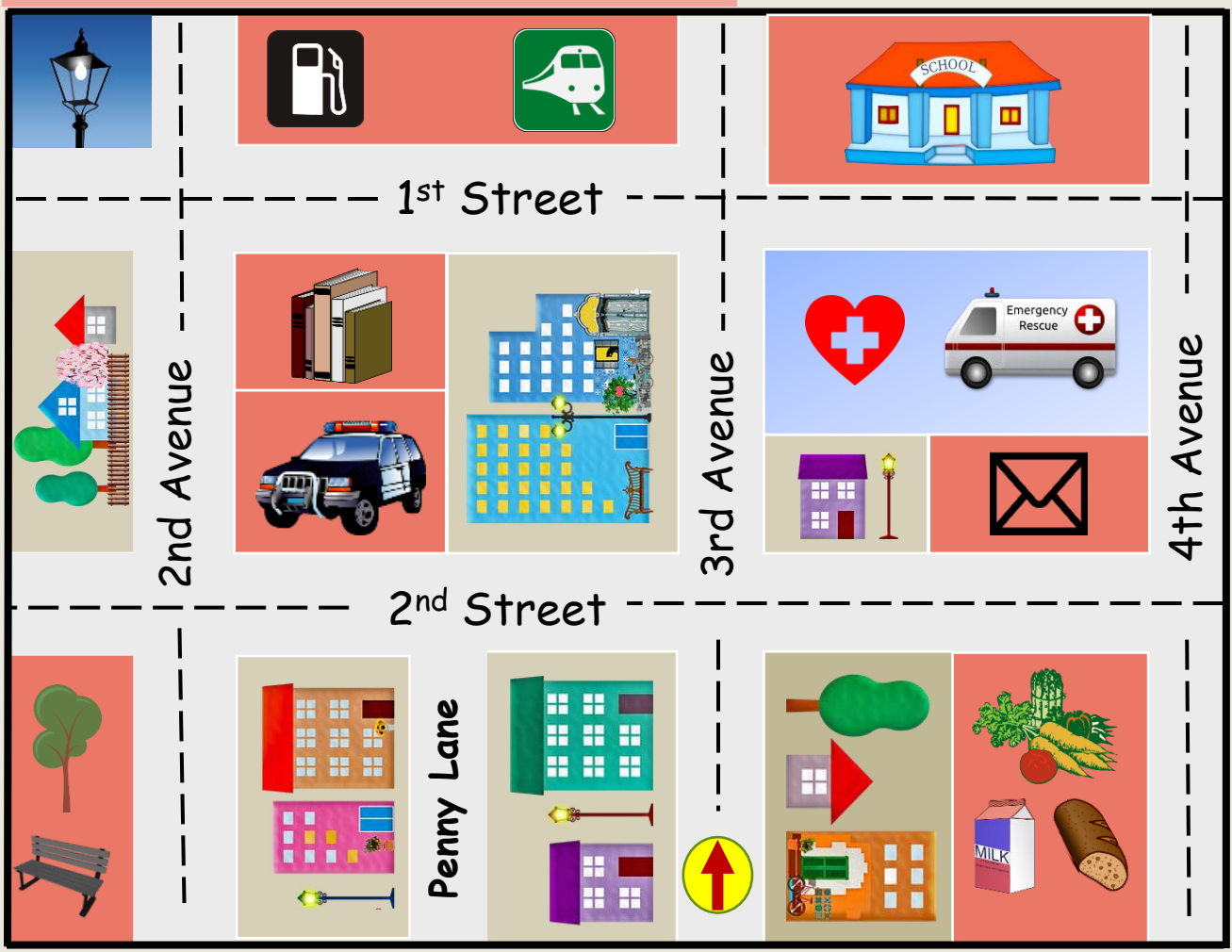
# Activity C: Can you tell me how to get to...?

Have a conversation with your classmate/teacher.  
One person is asking how to go to a place.  
The other is giving directions.



**Vocabulary** – gas station, train station, bookstore, school, hospital, post office, police station, supermarket, park

A: Where's the (supermarket) ?



**Instructions**  
 Student A asks where a place is and Student B gives directions using the 'Phrases'. Start at the red arrow. Aさんはある場所がどこかを聞き、Bさんは下のフレーズを使って答えます。赤の矢印から始めてね。

- B: Phrases**
- Go straight.
  - Turn left at the first / second corner.
  - Turn right at the first / second corner.
  - You can see it on your left / right.